

# XRAY XB8'15

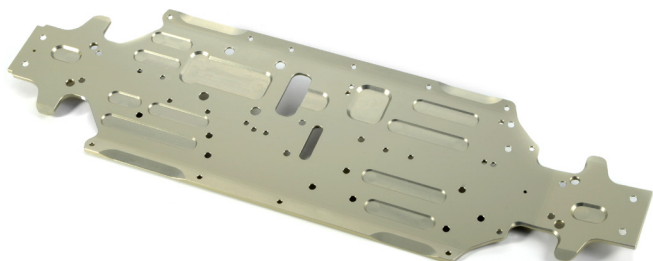
## INSTRUCTION MANUAL SUPPLEMENTARY SHEET

Use this XB8 2015 Supplementary Instruction Sheet along with the standard XB8 Instruction Manual included in the kit.

### New and Improved Parts

All of these parts are new or updated from the previous versions. Each part features its corresponding part number which can be used to for re-ordering. You can also refer to the complete exploded views.

## XB8 2015 SPEC



#351108 XB8 ALU CHASSIS - SWISS 7075 T6 (3MM) - HARD COATED - V2



#351158 XB8 CHASSIS SIDE GUARDS L + R W/OUT RIB



#352050 XB8 ALU FRONT SHOCK TOWER - CNC MACHINED 7075 T6 (4MM)



#352666 XB8 COMPOSITE RELIEF STEERING BALL JOINT 6.8MM - V2 (2)



#353050 XB8 ALU REAR SHOCK TOWER - CNC MACHINED 7075 T6 (4MM)



#355061 FRONT DIFF OUTDRIVE ADAPTER - LONG (2)



#358032 SHOCK PISTON SET 8-HOLE (1.2; 1.3) 10-H. (1.1MM) - DELRIN - V3  
#358033 SHOCK PISTON SET 6-HOLE (1.2; 1.3; 1.4MM) - DELRIN - V3



#358821 AIR FILTER BODY & CAP - LOW PROFILE - V2

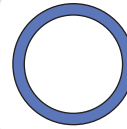


#962080 (S 8x0.1)



#962081 (S 8x0.2)

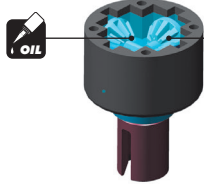
962080 & 962081 are NOT included,  
instead of them are included 962130 & 962131.



#962130  
WASHER  
S 13 x 16 x 0.2 mm (10)

#962131  
WASHER  
S 13 x 16 x 0.2 mm (10)

**Front diff:**  
Silicone oil **5 000cSt**  
Fill just above the satellite gears.



**Rear diff:**  
Silicone oil **3 000cSt**  
Fill just above the satellite gears.

